

CENTRA CARE Laboratory Services

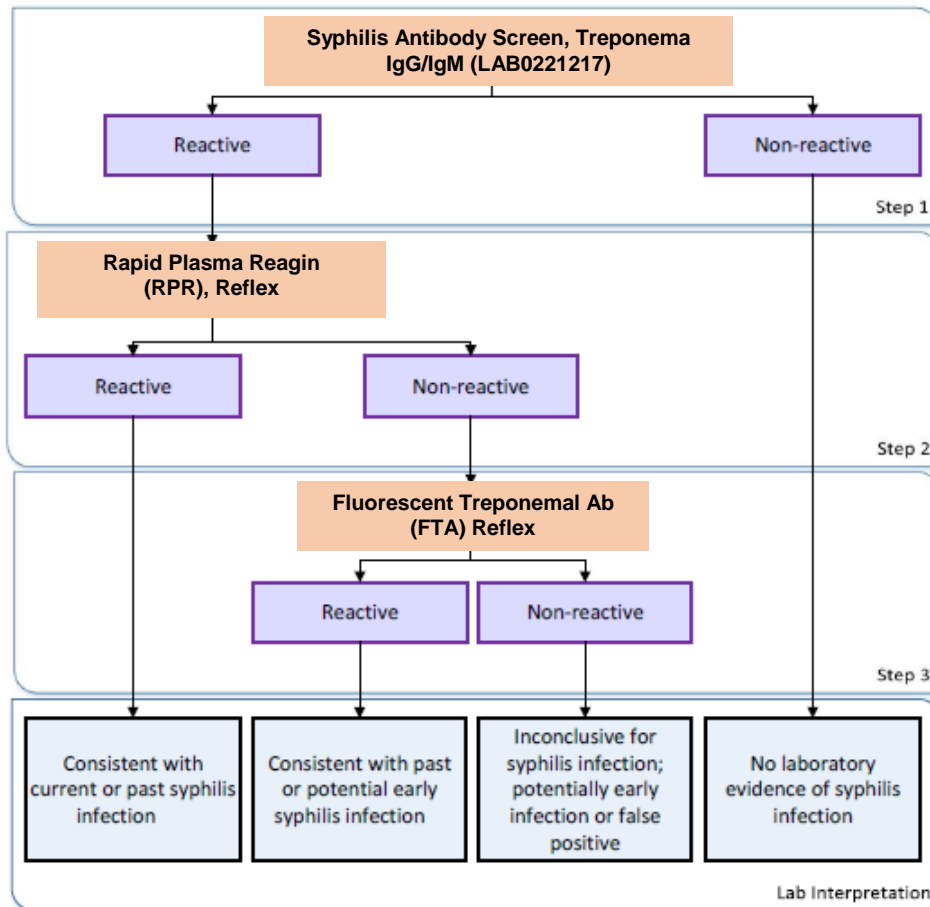
MEMO

TO: CCLS Clients
FROM: CentraCare Laboratory Services
DATE: October 31, 2016
SUBJECT: Syphilis Screening Changes

On November 15, 2016, CentraCare Health Laboratories will adopt the reverse syphilis serology testing algorithm as outlined below. The ***Syphilis Antibody Screen, Treponema IgG/IgM (LAB0221217)*** testing assay detects *Treponema pallidum* antigens (TpN15, TpN17 and TpN47). All samples with a “Reactive” screen will be reflexed for a RPR confirmation. Any samples with conflicting results will be forwarded to MDH for Fluorescent Treponemal Antibody (FTA) confirmation.

- The Syphilis Antibody Screen, Treponema IgG/IgM will be performed 7 days a week.
- RPR testing will be performed on Monday - Friday.
- Specimen Type: Serum

Reverse Syphilis Serology Testing Algorithm



Please contact Jerome Schlabsz, Chemistry Technical Specialist at 251-2700 ext. 57325 with any questions.