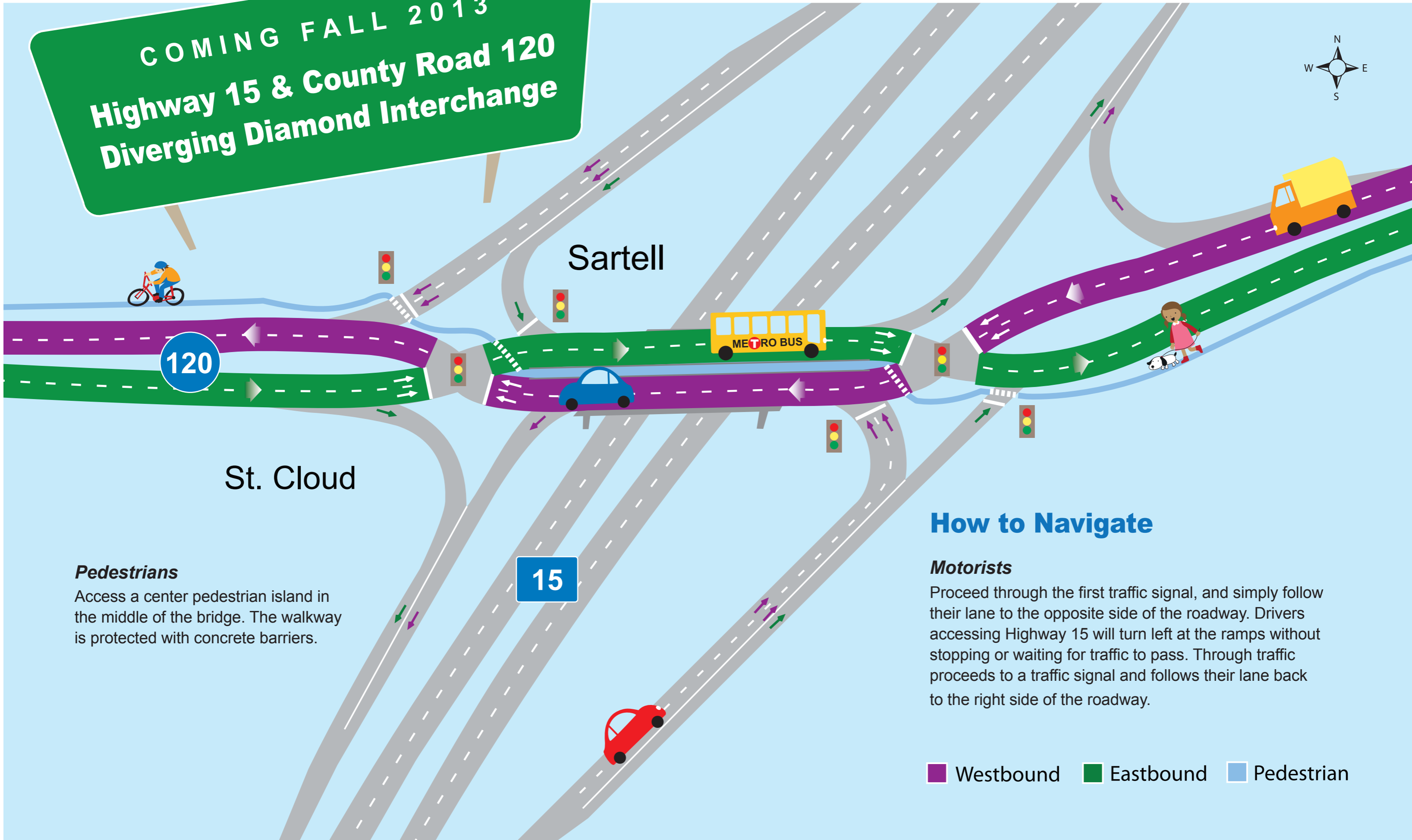
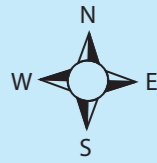


COMING FALL 2013
Highway 15 & County Road 120
Diverging Diamond Interchange



St. Cloud

Sartell

How to Navigate

Motorists

Proceed through the first traffic signal, and simply follow their lane to the opposite side of the roadway. Drivers accessing Highway 15 will turn left at the ramps without stopping or waiting for traffic to pass. Through traffic proceeds to a traffic signal and follows their lane back to the right side of the roadway.

Westbound
 Eastbound
 Pedestrian

Pedestrians

Access a center pedestrian island in the middle of the bridge. The walkway is protected with concrete barriers.